



100 150 200 tons per hour capacity gold washing plant for big scale mining in Egypt South Africa

Our Product Introduction

for more products please visit us on mining-crushermachine.com

Basic Information

- Place of Origin: Henan province, China
- Brand Name: Ascend
- Certification: ISO9001
- Model Number: GST20 GST50 MGT100 MGT200
- Minimum Order Quantity: 1 set
- Price: USD 2800-30000 Per set
- Packaging Details: Water and rust proof in wooden box or cotainer
- Delivery Time: 7-10 working days
- Payment Terms: T/T, Western Union
- Supply Ability: 10 set per month



Product Specification

- Product Name: Gold Washing Plant
- Capacity: 10 To 200 Ton Per Hour
- Applicable Industry: Energy&Mining
- Warranty: 1 Year
- Application: Energy & Mining



More Images



Product Description

China Ascend mobile Alluvial Placer Gold Washing Plant

Gold washing plant is a complete set of equipment, which can be mobile or fixed. The equipment includes a feed hopper, a rotary trommel screen or vibrating screen, a water pump, a high-pressure water spray gun, a centrifugal concentrator, an extraction chute and other accessories. It is mainly used for washing ore to select granular or powdered gold from river sand or gravel.





Trommel screen:

Gold mining trommel screen includes hopper, water pump, water pipe, diesel engine/motor, wheels, can be easily moved, and is specially designed for processing alluvial gold, river placer gold, diamonds, etc. The gold trommel screen is usually used in the primary separation stage of placer gold mining to wash and screen gold ore. The upper size is always regarded as useless material. The bottom size containing gold is usually processed continuously by centrifugal concentrator or gold tank to upgrade gold ore.



Knelson Centrifugal Concentrator:

Knelson gold centrifugal concentrator is to use the gravity centrifugal force to collect the gold concentrate in the river sand or soil, it is suitable to collect the gold mesh size from 200 mesh to 40 mesh, the recovery rate for free gold particles can reach high to 90%, it is a perfect partner working with the gold trommel screen plant.



Sluice chute:

The specifications of our sluice chute can be customized as customer's needs. We can customize the length, width, metal mesh and the carpet materials as customer's needs. We can also customize the cover on top to prevent gold being stolen.



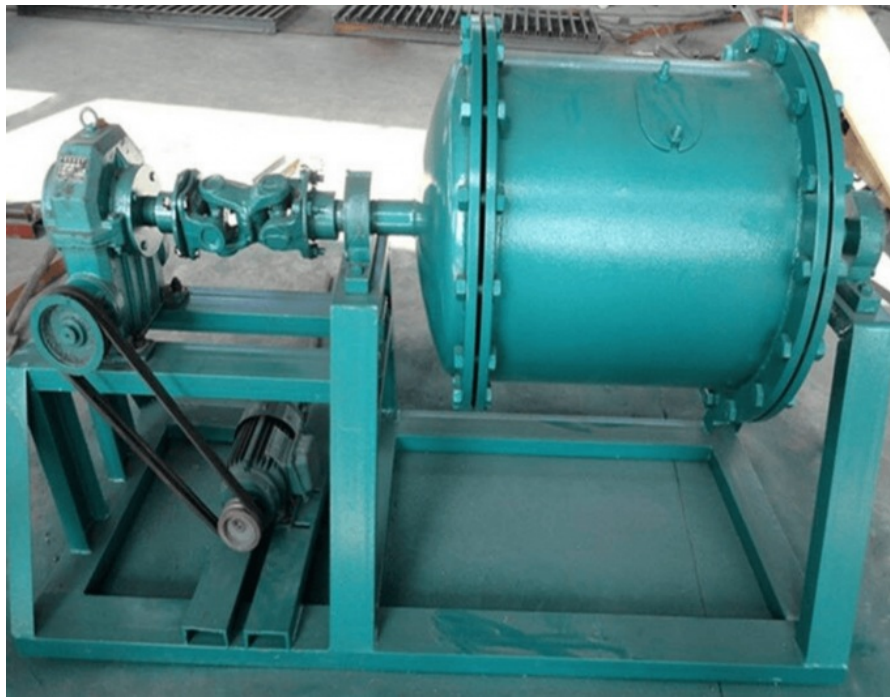
Shaking table:

After collecting gold concentrate from gold centrifugal concentrator and sluice chute, it is most commonly placed on a shaking table to further improve the gold grade. The shaking table sets the vibration intensity according to the density/weight of the metal for screening. Our shaking table have the advantages of high recovery rate and low production cost.



Mercury Amalgamation barrel or small ball mill:

The gold ore concentrate collected from the shaking table will be put in the small ball mill, or we call it mercury amalgamation barrel. Then it can mix with the mercury and form the gold and mercury mixture.



Electric Gold Melting Furnace:

After get the mixture of gold and mercury, we can put it in the electric gold melting furnace and heat it, then we will get the pure gold bar.



Gold mercury distiller separator:

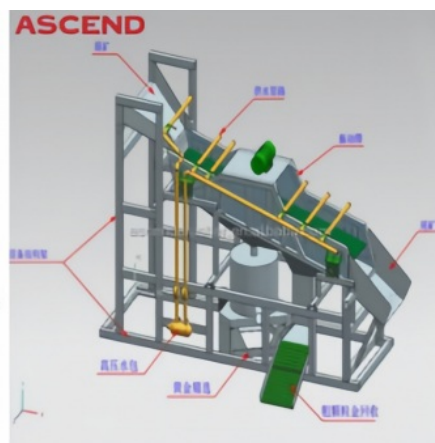
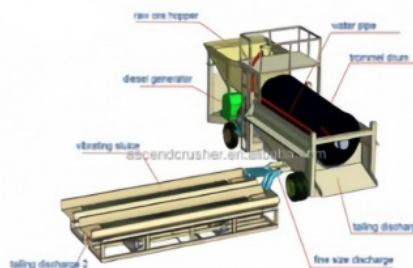
The mercury distiller separator is the device to separate mercury and gold. It is widely used in small gold mining plants to evaporate the Hg from the Hg+ gold mixture, and refining the pure gold. Since the mercury gasification temperature is lower than the melting point and boiling point of gold. We usually use distillation method to separate gold from amalgam.



Working Principle:

Once the gold washing plant is installed, river sand is usually delivered to a hopper by an excavator or loader and then sent to a rotary trommel screen. This screen removes larger sand particles (over 8 mm) and finer sand particles (less than 8 mm) and sends them to a centrifugal concentrator or vibrating trough (we usually recommend the concentrator because it can efficiently recover gold particles of various particle sizes (40 to 200 mesh)). After that, the remaining gold particles are extracted using a gold blanket trough.

ASCEND



Specifications:

SPECIFICATIONS OF GOLD EXTRACTION EQUIPMENT FOR WASHING GOLD SEPARATOR MACHINE				
Model	GTS20	GTS50	MGT100	MGT200
Parameters				
Size /mm	6000*1600*2499	7000*2000*3000	8300*2400*4700	9800*3000*5175
Capacity	20-40 tph	50-80 tph	100-150 tph	200-300 tph
Power	20 kw	30 kw	50 kw	80 kw
Trommel Screen /mm	φ1000*2000	φ1200*3000	φ1500*3500	φ1800*4000
Sluice Box	2 sets	2 sets	3 sets	4 sets
Water Supply /m ³	80m ³	120 m ³	240 m ³	370 m ³
Recovery Rate	95%	98%	98%	98%

Advantages:

- (1) The screen is easy to transport and install in mining operations.
- (2) It is an economical and practical solution whether processing small or large amounts of material.
- (3) The screen is equipped with a variety of filters suitable for different high-capacity drums to ensure complete separation of fine materials.
- (4) The design allows the end user to flexibly change the screen according to the size of the screen hole.
- (5) The multi-layer screening design is convenient for selection.
- (6) The replaceable screen plate facilitates the replacement of wear parts.
- (7) The drum screen is highly efficient, has a large processing capacity, and can adapt to different material quantities.
- (8) The unique design of the drum screen ensures higher processing capacity, longer service life, and prevents material clogging.

Packing & Delivery



Working sites





ASCEND Henan Ascend Machinery Equipment Co., Ltd.

+86 18221130967

wilson_ascendme@163.com

mining-crushermachine.com

Shenglong block, high tech zone, Zhengzhou, China