



80TPH mobile gold washing plant with trommel screen Knelson gold centrifugal concentrator and sluice chute

Basic Information

- Place of Origin: Henan province, China
- Brand Name: Ascend
- Certification: ISO9001
- Model Number: GST20 GST50 MGT100 MGT200
- Minimum Order Quantity: 1 set
- Price: USD 2800-30000 Per set
- Packaging Details: Water and rust proof in wooden box or cotainer
- Delivery Time: 7-10 working days
- Payment Terms: T/T, Western Union
- Supply Ability: 10 set per month



Product Specification

- Product Name: Gold Washing Plant
- Capacity: 10 To 200 Ton Per Hour
- Applicable Industry: Energy&Mining
- Warranty: 1 Year
- Application: Energy & Mining
- Color: Customized



More Images



Product Description

Mobile Alluvial Placer 50TPH Gold Washing Plant

Gold washing plant is a complete set of gold beneficiation equipment, mainly used to extract gold from alluvial deposits or gold ore. Its main equipment includes feeder, gold trommel screen, shaking table and gold centrifugal concentrator, which effectively recovers gold particles through screening, re-selection and centrifugal separation. Mobile gold washing plant is a kind of alluvial gold beneficiation equipment that can be moved on land. It has the advantages of high efficiency, strong processing capacity, easy to move, install and maintain in mines. Its recovery rate can reach 90% to 95%. Our gold washing plant is exported to Sudan, Papua New Guinea, Ethiopia and other countries.





Trommel screen:

The trommel screen is mainly used for washing gold and alluvial gold ore. It is composed of a semi-covered drum screen, a diesel engine, a water pump, a pipeline, a hopper, a mobile trailer and other equipment. (Use an excavator to feed the raw materials into the washing drum hopper. Large stones larger than 20 mm will be extracted from the hopper bars, while small stones smaller than 20 mm will enter the washing drum screen.)



Knelson Centrifugal Concentrator:

Knelson gold centrifugal concentrator is to use the gravity centrifugal force to collect the gold concentrate in the river sand or soil. It is suitable to collect the gold mesh size from 200 mesh to 40 mesh, and its capacity is about 1 to 80 tons per hour. Application shows, the recovery rate for free gold particles can reach as high as 99%.



Sluice chute:

The specifications of our sluice chute can be customized as customer's needs. We can customize the length, width, metal mesh and the carpet materials as customer's needs. We can also customize the cover on top to prevent gold being stolen.



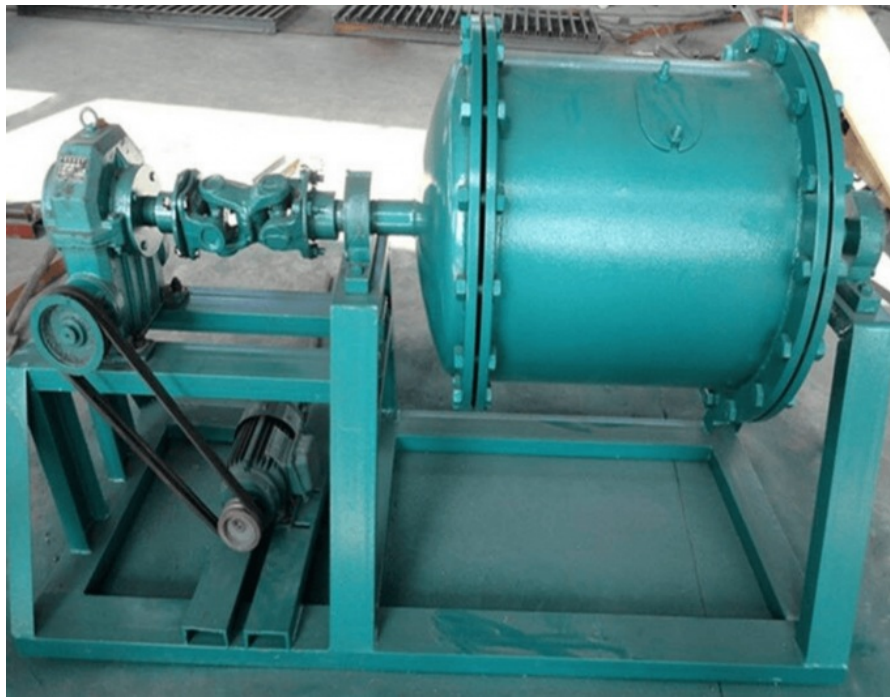
Shaking table:

After collecting gold concentrate from gold centrifugal concentrator and sluice chute, it is most commonly placed on a shaking table to further improve the gold grade. The shaking table sets the vibration intensity according to the density/weight of the metal for screening. Our shaking table have the advantages of high recovery rate and low production cost.



Mercury Amalgamation barrel or small ball mill:

The gold ore concentrate collected from the shaking table will be put in the small ball mill, or we call it mercury amalgamation barrel. Then it can mix with the mercury and form the gold and mercury mixture.



Electric Gold Melting Furnace:

After get the mixture of gold and mercury, we can put it in the electric gold melting furnace and heat it, then we will get the pure gold bar.



Gold mercury distiller separator:

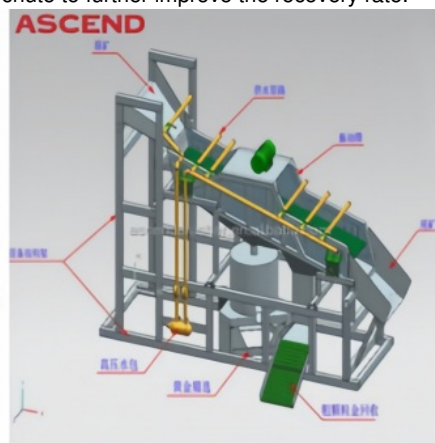
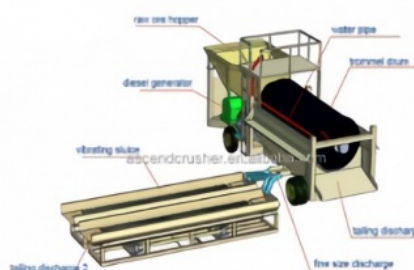
The mercury distiller separator is the device to separate mercury and gold. It is widely used in small gold mining plants to evaporate the Hg from the Hg+ gold mixture, and refining the pure gold. Since the mercury gasification temperature is lower than the melting point and boiling point of gold. We usually use distillation method to separate gold from amalgam.



Working Principle:

After the installation is completed, the raw materials are extracted by excavators and fed to the washing drum hopper. Large stones larger than 20 mm are screened by the hopper bars, while small stones smaller than 20 mm are fed to the drum screen. (The screen size can be customized according to customer needs.) The clay or mud in the raw materials is removed from the rotary screen, and then the gold particles are fed to the centrifugal concentrator or the oscillating vibrating chute (we generally recommend the concentrator, as it achieves high gold recovery of different particle sizes, from 40 to 200 mesh). After the concentrator, a chute is installed with a gold belt, depositing the gold concentrate at the bottom of it for the recovery of the remaining gold. The gold tailings are then collected in the fixed chute to further improve the recovery rate.

ASCEND



Specifications:

SPECIFICATIONS OF GOLD EXTRACTION EQUIPMENT FOR WASHING GOLD SEPARATOR MACHINE				
Model	GTS20	GTS50	MGT100	MGT200
Parameters				
Size /mm	6000*1600*2499	7000*2000*3000	8300*2400*4700	9800*3000*5175
Capacity	20-40 tph	50-80 tph	100-150 tph	200-300 tph
Power	20 kw	30 kw	50 kw	80 kw
Trommel Screen /mm	φ1000*2000	φ1200*3000	φ1500*3500	φ1800*4000
Sluice Box	2 sets	2 sets	3 sets	4 sets
Water Supply /m ³	80m ³	120 m ³	240 m ³	370 m ³
Recovery Rate	95%	98%	98%	98%

Advantages:

- (1) Easy to move and install within the mine.
- (2) It is an economical and viable choice for both small and large batch material processing.
- (3) The drum screen is equipped with a variety of filters suitable for different heavy drums to ensure complete separation of fine materials.
- (4) The design enables the end user to flexibly replace the drum screen according to the screen hole size.
- (5) The multi-layer screening design improves the screening process.
- (6) The replaceable screen plate facilitates the replacement of worn parts.
- (7) The drum screen has high efficiency and large processing capacity, and is suitable for materials of different volumes.
- (8) The unique design of the drum screen can achieve higher processing capacity, extend the service life of the drum screen, and avoid material clogging.

Packing & Delivery



Working sites





ASCEND Henan Ascend Machinery Equipment Co., Ltd.

+86 18221130967

wilson_ascendme@163.com

mining-crushermachine.com

Shenglong block, high tech zone, Zhengzhou, China