



Factory price 50 100 200tph full placer gold processing wash plant for gold mining in African countries

Our Product Introduction

for more products please visit us on mining-crushermachine.com

Basic Information

- Place of Origin: Henan province, China
- Brand Name: Ascend
- Certification: ISO9001
- Model Number: GST20 GST50 MGT100 MGT200
- Minimum Order Quantity: 1 set
- Price: USD 2800-30000 Per set
- Packaging Details: Water and rust proof in wooden box or cotainer
- Delivery Time: 7-10 working days
- Payment Terms: T/T, Western Union
- Supply Ability: 10 set per month

ASCEND



Product Specification

- Product Name: Gold Washing Plant
- Capacity: 10 To 200 Ton Per Hour
- Applicable Industry: Energy&Mining
- Warranty: 1 Year
- Application: Energy & Mining

ASCEND



More Images

ASCEND



ASCEND



ASCEND



Product Description

China Ascend mobile Alluvial Placer Gold Washing Plant

Gold trommel screen washing plant placer rotary equipment is a complete set of equipment, which can be mobile or fixed. It includes feeding hopper, trommel screen or vibrating screen, water pump and high-pressure water spray gun, gold centrifugal concentrator, gold chute and other accessories. It is mainly used for washing ore, selecting the partial or powdered gold in river sand or gravel.





Trommel screen:

Gold mining trommel screen includes hopper, water pump, water pipe, diesel engine/motor, wheels, can be easily moved, and is specially designed for processing alluvial gold, river placer gold, diamonds, etc. The gold trommel screen is usually used in the primary separation stage of placer gold mining to wash and screen gold ore. The upper size is always regarded as useless material. The bottom size containing gold is usually processed continuously by centrifugal concentrator or gold tank to upgrade gold ore.



Knelson Centrifugal Concentrator:

Knelson gold centrifugal concentrator is to use the gravity centrifugal force to collect the gold concentrate in the river sand or soil, it is suitable to collect the gold mesh size from 200 mesh to 40 mesh, the recovery rate for free gold particles can reach high to 90%, it is a perfect partner working with the gold trommel screen plant.



Sluice chute:

The specifications of our sluice chute can be customized as customer's needs. We can customize the length, width, metal mesh and the carpet materials as customer's needs. We can also customize the cover on top to prevent gold being stolen.



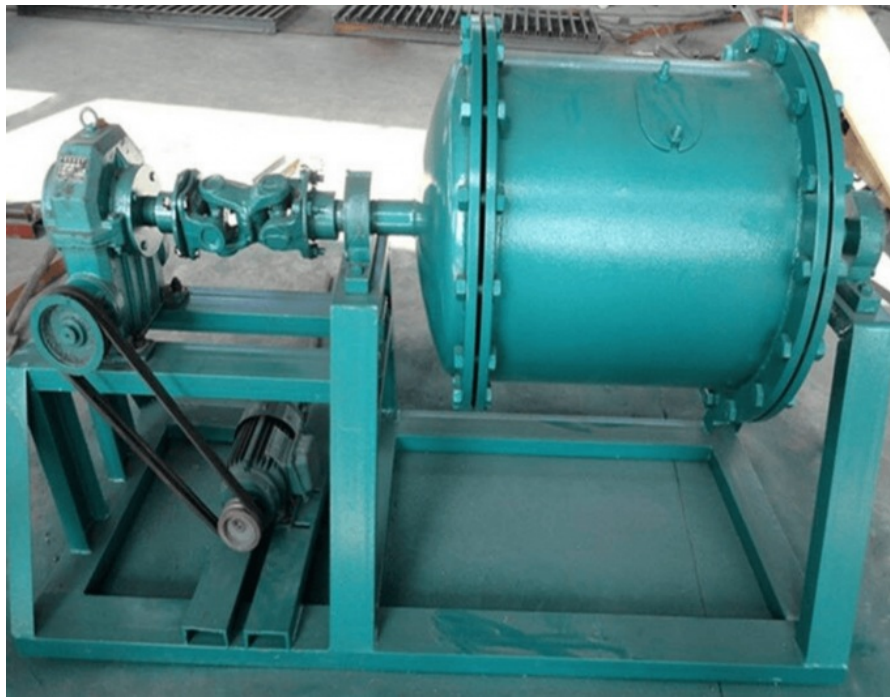
Shaking table:

After collecting gold concentrate from gold centrifugal concentrator and sluice chute, it is most commonly placed on a shaking table to further improve the gold grade. The shaking table sets the vibration intensity according to the density/weight of the metal for screening. Our shaking table have the advantages of high recovery rate and low production cost.



Mercury Amalgamation barrel or small ball mill:

The gold ore concentrate collected from the shaking table will be put in the small ball mill, or we call it mercury amalgamation barrel. Then it can mix with the mercury and form the gold and mercury mixture.



Electric Gold Melting Furnace:

After get the mixture of gold and mercury, we can put it in the electric gold melting furnace and heat it, then we will get the pure gold bar.



Gold mercury distiller separator:

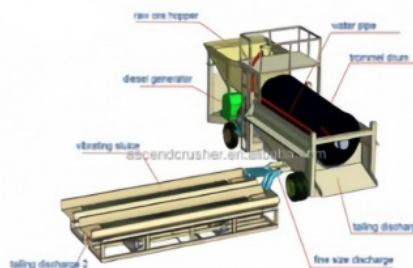
The mercury distiller separator is the device to separate mercury and gold. It is widely used in small gold mining plants to evaporate the Hg from the Hg+ gold mixture, and refining the pure gold. Since the mercury gasification temperature is lower than the melting point and boiling point of gold. We usually use distillation method to separate gold from amalgam.



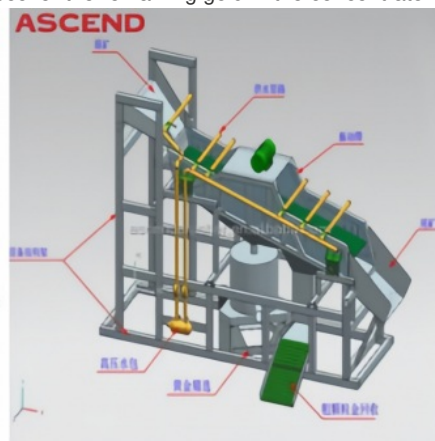
Working Principle:

After finishing installation of the whole plant. Usually use excavator or payloader to feed the river sand into the hopper, then the sand go to the trommel screen. When the rotary trommel screen is rotating, big size more than 8mm sand will be screened out, small sizes less than 8mm will go to the gold centrifugal concentrator or vibrating gold sluice (usually we recommend concentrator, as it can achieve high recovery rate for different gold particle sizes from 40 mesh to 200 mesh). Following the concentrator is gold sluice with gold blanket, which is used to recover the remaining gold in the concentrator.

ASCEND



ASCEND



Specifications:

SPECIFICATIONS OF GOLD EXTRACTION EQUIPMENT FOR WASHING GOLD SEPARATOR MACHINE				
Model	GTS20	GTS50	MGT100	MGT200
Parameters				
Size /mm	6000*1600*2499	7000*2000*3000	8300*2400*4700	9800*3000*5175
Capacity	20-40 tph	50-80 tph	100-150 tph	200-300 tph
Power	20 kw	30 kw	50 kw	80 kw
Trommel Screen /mm	φ1000*2000	φ1200*3000	φ1500*3500	φ1800*4000
Sluice Box	2 sets	2 sets	3 sets	4 sets
Water Supply /m ³	80m ³	120 m ³	240 m ³	370 m ³
Recovery Rate	95%	98%	98%	98%

Advantages:

- (1) It is easy to move and install inside the mining area.
- (2) It is an economical and viable option for material processing from small to large quantities.
- (3) The screen is equipped with various filters for different heavy-duty drums, ensuring complete separation of fine materials.
- (4) The design provides the end user with the flexibility to change the screen according to the mesh size.
- (5) Multi-layer screening improves the selection process.
- (6) It has replaceable screen plates to facilitate the replacement of wear parts.
- (7) The trommel screen has high efficiency and big capacity for different volumes of materials.
- (8) The trommel screen adopts a unique design to achieve higher capacity, extend the service life of the screen, and avoid material clogging.

Packing & Delivery



Working sites





ASCEND Henan Ascend Machinery Equipment Co., Ltd.

+86 18221130967

wilson_ascendme@163.com

mining-crushermachine.com

Shenglong block, high tech zone, Zhengzhou, China