



## China Ascend 50 60 tons per hour capacity gold trommel washing plant for alluvial gold recovery in Austrian

Our Product Introduction

for more products please visit us on [mining-crushermachine.com](http://mining-crushermachine.com)

### Basic Information

- Place of Origin: Henan province, China
- Brand Name: Ascend
- Certification: ISO9001
- Model Number: GST20 GST50 MGT100 MGT200
- Minimum Order Quantity: 1 set
- Price: USD 2800-30000 Per set
- Packaging Details: Water and rust proof in wooden box or cotainer
- Delivery Time: 7-10 working days
- Payment Terms: T/T, Western Union
- Supply Ability: 10 set per month

**ASCEND**



### Product Specification

- Product Name: Gold Washing Plant
- Capacity: 10 To 200 Ton Per Hour
- Applicable Industry: Energy&Mining
- Warranty: 1 Year
- Application: Energy & Mining
- Color: Customized

**ASCEND**



### More Images



## Product Description

### Mobile Alluvial Placer 50TPH Gold Washing Plant

Gold washing plant is a complete set of equipment used for gold beneficiation, mainly used to extract gold from placer gold mines or gold-containing ores. Its core equipment includes feeders, trommel screen, shaking table, gold centrifugal concentrator, etc., which can efficiently recover gold particles through screening, gravity separation and centrifugal separation. The mobile gold washing plant is a combined placer gold processing equipment that can be moved on land. It has the advantages of high efficiency, large capacity, and easy movement, installation and maintenance in the mining working sites. Its recovery rate can reach 90%-95%. Our gold plant is sold in Sudan, Papua New Guinea, Ethiopia and other countries.





#### **Trommel screen:**

The trommel screen is mainly used for washing and screening placer gold and alluvial gold ore. It consists of a semi-covered gold trommel screen, a diesel engine, a water pump and pipes, as well as other equipment such as a hopper and a mobile trailer. ( Use excavator to dig the raw material and feed into the hopper of the washing trommel, big stone larger than 20mm will be screened out from the grate bars of the hopper, small size less than 20mm will go into the washing trommel screen.)



#### **Knelson Centrifugal Concentrator:**

The Knelson gold centrifugal concentrator uses gravity centrifugal force to collect gold concentrate from river sand or soil. The equipment is suitable for collecting gold concentrates from 200 mesh to 40 mesh, with a processing capacity of about 1 to 80 tons per hour. Practical applications have shown that the recovery rate of free gold particles is as high as 99%.





**Sluice chute:**

Our chutes can be customized to your needs. Length, width, metal mesh and carpet material can all be customized. We can also customize the top cover to prevent gold theft.



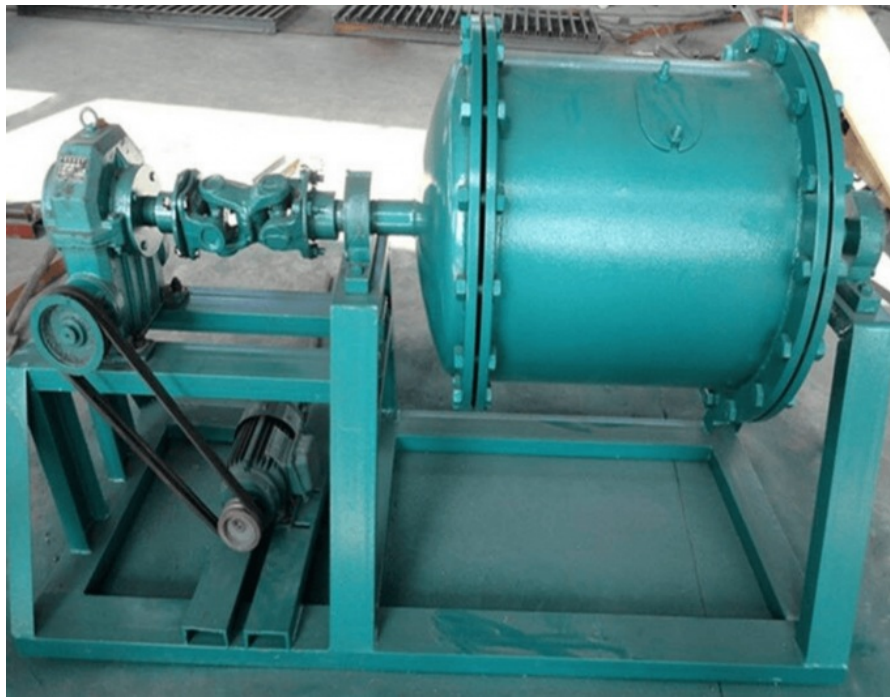
**Shaking table:**

After collecting gold concentrate from gold centrifugal concentrator and sluice chute, it is most commonly placed on a shaking table to further improve the gold grade. The shaking table sets the vibration intensity according to the density/weight of the metal for screening. Our shaking table have the advantages of high recovery rate and low production cost.



**Mercury Amalgamation barrel or small ball mill:**

The gold ore concentrate collected from the shaking table will be put in the small ball mill, or we call it mercury amalgamation barrel. Then it can mix with the mercury and form the gold and mercury mixture.



**Electric Gold Melting Furnace:**

After get the mixture of gold and mercury, we can put it in the electric gold melting furnace and heat it, then we will get the pure gold bar.



**Gold mercury distiller separator:**

The mercury distiller separator is the device to separate mercury and gold. It is widely used in small gold mining plants to evaporate the Hg from the Hg+ gold mixture, and refining the pure gold. Since the mercury gasification temperature is lower than the melting point and boiling point of gold. We usually use distillation method to separate gold from amalgam.



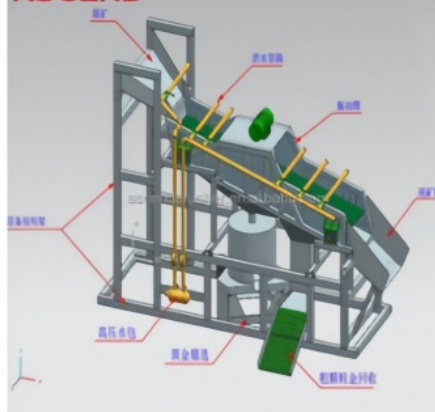
#### Working Principle:

After finishing installation of the whole plant. Use excavator to dig the raw material and feed into the hopper of the washing trommel, big stone larger than 20mm will be screened out from the grate bars of the hopper, small size less than 20mm will go into the trommel screen. (The mesh size can be customized according to the customer's need.) The clay or mud in the raw material will be washed away from the rotary trommel screen, and then the gold particles will be feed into the gold centrifugal concentrator or swing vibrating sluice, (usually we recommend concentrator, because it can achieve high recovery rate for different gold particle sizes from 40 mesh to 200 mesh). Following the concentrator is gold sluice with gold blanket, the gold concentrate sediment in the bottom of the gold blanket, which is used to recover the remaining gold in the concentrator. The tailing gold will be collected again from the fixed sluice box to further improve the recovery rate.

#### ASCEND



#### ASCEND



#### Specifications:

SPECIFICATIONS OF GOLD EXTRACTION EQUIPMENT FOR WASHING GOLD SEPARATOR MACHINE				
Model	GTS20	GTS50	MGT100	MGT200
Parameters				
Size /mm	6000*1600*2499	7000*2000*3000	8300*2400*4700	9800*3000*5175
Capacity	20-40 tph	50-80 tph	100-150 tph	200-300 tph
Power	20 kw	30 kw	50 kw	80 kw
Trommel Screen /mm	φ1000*2000	φ1200*3000	φ1500*3500	φ1800*4000
Sluice Box	2 sets	2 sets	3 sets	4 sets
Water Supply /m <sup>3</sup>	80m <sup>3</sup>	120 m <sup>3</sup>	240 m <sup>3</sup>	370 m <sup>3</sup>
Recovery Rate	95%	98%	98%	98%

#### Advantages:

- (1) Easy to move and install within the mine.
- (2) It is an economical and viable choice for both small and large batch material processing.
- (3) The drum screen is equipped with a variety of filters suitable for different heavy drums to ensure complete separation of fine materials.
- (4) The design enables the end user to flexibly replace the drum screen according to the screen hole size.
- (5) The multi-layer screening design improves the screening process.
- (6) The replaceable screen plate facilitates the replacement of worn parts.
- (7) The drum screen has high efficiency and large processing capacity, and is suitable for materials of different volumes.
- (8) The unique design of the drum screen can achieve higher processing capacity, extend the service life of the drum screen, and avoid material clogging.



## Packing & Delivery



## Working sites





**ASCEND** Henan Ascend Machinery Equipment Co., Ltd.

+86 18221130967

wilson\_ascendme@163.com

mining-crushermachine.com

Shenglong block, high tech zone, Zhengzhou, China