



## Gold Silver Copper Iron Ore Grinding Machine 900x1800 Model Ball Mill Crusher For Powder Making In Sudan Zambia Zimbabwe

Our Product Introduction

for more products please visit us on [mining-crushermachine.com](http://mining-crushermachine.com)

### Basic Information

- Place of Origin: CHINA
- Brand Name: ASCEND
- Certification: ISO9001
- Model Number: 900x1200,900x1800,900x2400,900x3000
- Minimum Order Quantity: 1 set
- Price: USD 5800-6800 set
- Packaging Details: Water and rust proof in wooden box or container
- Delivery Time: 7-10 work days
- Payment Terms: T/T, Western Union
- Supply Ability: 30 set per month

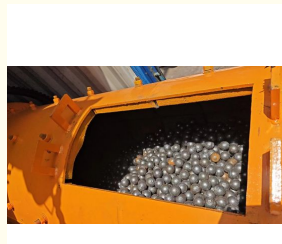


### Product Specification

- After-sales Service Provided: Field Installation, Commissioning And Training
- Product Keywords: Ball Mill Pulverizer, ball Mill For Gold Ore, ball Mill For Coal
- Product Name: Ball Mill Machine
- Keywords: Stone Grinding Miller
- Feeding Size: 20mm
- Color: According To Customer Requirement
- Output Size: 0.1-0.178mm
- Highlight: **900x1800 Ball Mill Crusher, Powder Making Ball Mill Crusher, Copper Iron Ore Ball Mill Crusher**



### More Images



## Product Description

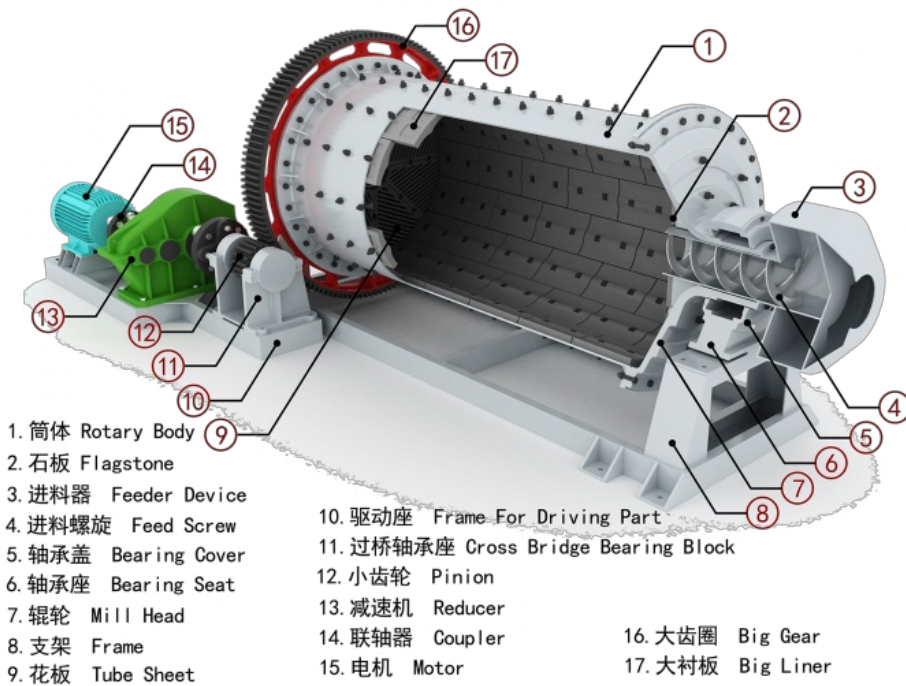
### 900x1800 ball mill grinding machine 1 2 3 tph gold silver stone grinding

Ball mill is an effective grinding equipment that uses steel balls as grinding media. It is widely used for grinding various ores and other materials in mineral processing, building materials and chemical industries.



### Working principle

The ball mill grind machine is composed of feeding part, discharging part, rotating part, transmission part (reducer, small transmission gear, motor, electric control) and other main parts. The motor drive the speed reducer, the speed reducer drive the small gear, the small gear drive the big gear, the big gear drive the rotary body moving. The material enters from the feeding mouth, and ground into powder by the impact of steel balls and ore and self-grinding. There is a grate at the discharging mouth (at the big gear) for filtering. Due to continuous feeding materials, the pressure pushes the material to the discharging mouth, the small particles go out from the grate to the discharging mouth, and the big particles continue to grind. The ore pulp surface in the cylinder is low, which reduces the over-grinding of ore and prevents the steel balls from falling out. Under the same production conditions, the production capacity of the grid mill is greater than that of the overflow mill. Rolling bearings are used at both ends of the cylinder instead of sliding bearings, which is more energy-efficient.



### Advantages

**Wide range of applicable materials:** ball mills can process more than 100 different mineral materials, such as gold silver iron ore, and can show excellent grinding result whether dry or wet grinding.

**Large crushing ratio:** Compared with other grinding equipment, ball mills have a higher crushing ratio and can grind materials to finer particle sizes.

**Strong production capacity:** By adjusting the discharge port, the ball mill can grind materials with different fineness requirements to meet different production needs.

**Easy maintenance:** The ball mill is made of wear-resistant materials and has a long service life. At the same time, its maintenance process is relatively simple, which saves a lot of time and cost for the company.

**Energy saving and environmental protection:** Equipped with advanced dust removal and noise reduction equipment, the ball mill not only reduces environmental pollution, but also improving production efficiency.

### Specification

Model	Rotation speed (r/m)	Grind media (ton)	Feed size (mm)	Discharge size (mm)	Capacity (t/h)	Motor (KW)	Weight (ton)
900x1200	36	1.0	0-25	0.074-0.4	0.5-1.5	18.5	4
900x1800	36	1.5	0-25	0.074-0.4	0.5-2	22	4.8
900x2100	38	1.5	0-25	0.074-0.4	0.5-2	22	4.8
900x2400	38	1.8	0-25	0.074-0.4	0.7-2.8	22	4.8
900x3000	38	2.5	0-25	0.074-0.4	0.8-3.5	30	5.0
1200x2400	32	3.8	0-25	0.074-0.4	0.9-4.8	30	9.2
1200x3000	32	4.5	0-25	0.074-0.4	1.2-5.6	37	11.5
1200x4500	30	5.5	0-25	0.074-0.4	1.5-6.0	55	13.6
1500x3000	27	7.0	0-25	0.074-0.4	2.5-6.5	75	15.0
1500x3500	27	8.5	0-25	0.074-0.4	3.0-8.2	75	15.6
1500x4500	27	11	0-25	0.074-0.4	4-10	95	21.0
1500x5700	27	12	0-25	0.074-0.4	4-13	110	23.5
1830x3000	24	12	0-25	0.074-0.4	5-15	130	31.0
1830x3600	24	13	0-25	0.074-0.4	5-16	130	32.0
1830x4500	24	14	0-25	0.074-0.4	5-18	155	33.5
1830x7000	24	21	0-25	0.074-0.4	6-20	210	36.0
2100x3000	24	18	0-25	0.074-0.4	7-26	210	38.0
2100x3600	24	21	0-25	0.074-0.4	7-35	215	39.5
2100x4500	24	26	0-25	0.074-0.4	8-42	245	43.5
2400x3000	21	23	0-25	0.074-0.4	8-60	285	55.0

### Main parts & Spare parts







Shipping & Packing





**Ascend Ball Mill Processing**







Contact us

**Contact: Wilson**  
**Mobile: +86-18221130967**  
**Email: wilson\_ascendme@163.com**



**Wechat**



**WhatsApp**



**ASCEND** Henan Ascend Machinery Equipment Co., Ltd.

+86 18221130967

wilson\_ascendme@163.com

mining-crushermachine.com

Shenglong block, high tech zone, Zhengzhou, China