



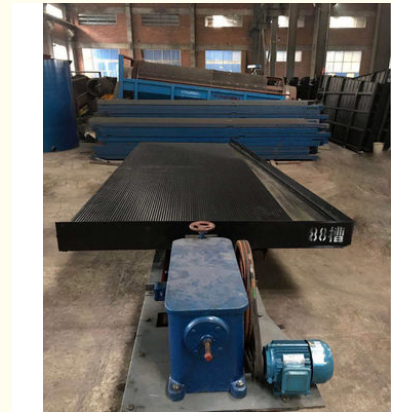
## Gold Mining Concentrating Table Shaking Table Ore Dressing Equipment

Our Product Introduction

for more products please visit us on [mining-crushermachine.com](http://mining-crushermachine.com)

### Basic Information

- Place of Origin: China
- Brand Name: Ascend
- Certification: CE/ISSO9001
- Model Number: 6s
- Minimum Order Quantity: 1 set
- Price: 1000 to 1500 USD
- Packaging Details: Water and rust proof in wooden box or cotainer
- Delivery Time: 7-10 working days
- Payment Terms: T/T, Western Union, L/C
- Supply Ability: 100 set per month

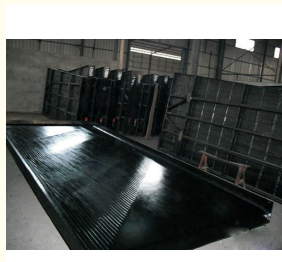
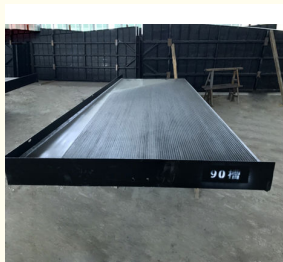


### Product Specification

- Name: Mining Shaking Table, Shaker Table
- Material: Glass Steel
- Motor: AC Motor
- Warranty: One Year
- Type: Gravity Separator, gold Ore Processing Equipment, gold Concentrator
- After-sales Service Provided: Engineers Available To Service Machinery Overseas
- Condition: New
- Dimension(l\*w\*h): Diffrent Model
- Voltage: 220V/380V
- Power(w): 1.5-11KW
- Application: Copper Ore, gold Ore, zinc
- Highlight: **Mining Concetrating gold shaker table, Tungsten gold ore processing equipment, Shaking Table Ore Dressing Equipment**



### More Images



## Product Description

### High Efficiency Gold Gravity Mining Shaking Table Separator Machine

Shaking table is also called shaker table, gravity table concentrator, and it is a gravity separation device for fine minerals. Shaking table is effective in processing precious and base metal, rare metal and non-metallic minerals, widely used in separation of Gold, Silver, Tin, Columbium, Tantalum, Titanium, Barium, Tungsten, Iron, Chrome, Manganese, Zircon, Lead, Zinc, Mercury, Copper, Aluminum etc.

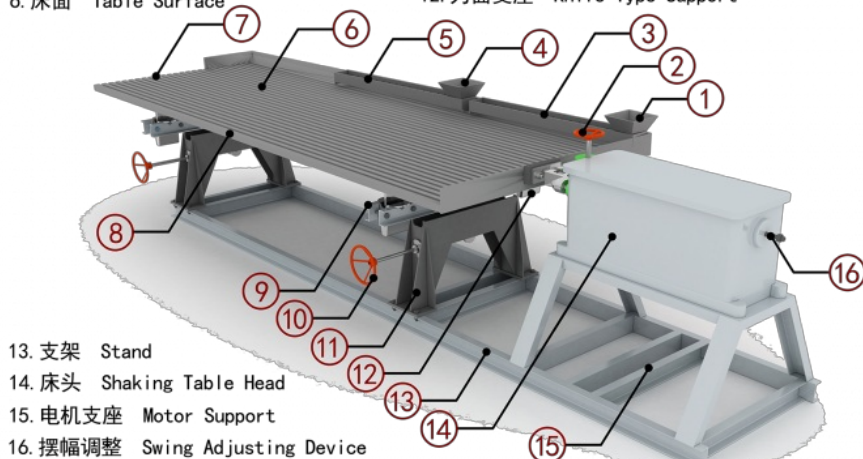
Our shaking table can produce mob type, the coarse ore deck is designed for recovering particles size from 0.5 mm to 2 mm; the fine sand deck is designed for recovering fine particles in the range of 0.074 mm to 0.5 mm; the slime deck is designed for recovering super extremely fine particles in the range of 0.037 mm to 0.074 mm.



#### Working principle

The working principle of Shaking Table is to use the combined action of the specific gravity difference of sorted minerals, alternating movement of bed surface, and transverse oblique water flow and riffle (or notch groove), to allow loose layering of ores on the bed surface and fan-shaped zoning. Then different products can be produced.

- |                                 |                                       |
|---------------------------------|---------------------------------------|
| 1. 给矿口 Ore Feeding Mouth        | 7. 精矿出口 Concentrates Discharging Area |
| 2. 冲程调整 Stroke Adjusting Device | 8. 尾矿出口 Tailings Discharging Area     |
| 3. 给矿槽 Ore Feeding Chute        | 9. 水平支架 Horizontal Support            |
| 4. 给水口 Water Feeding Mouth      | 10. 水平调节轮 Horizontal Adjustment Wheel |
| 5. 给水槽 Water Feeding Chute      | 11. 床面支座 Table Support                |
| 6. 床面 Table Surface             | 12. 刀面支座 Knife-Type Support           |



- |                                 |
|---------------------------------|
| 13. 支架 Stand                    |
| 14. 床头 Shaking Table Head       |
| 15. 电机支座 Motor Support          |
| 16. 摆幅调整 Swing Adjusting Device |

#### Main Features:

1. High recovery ratio
2. High concentration ratio
3. Easy installation
4. Simple operation
5. Deck constructed of fiber glass
6. Seven different decks to choose
7. Long working life

8.Adjustable stroke length and speed.



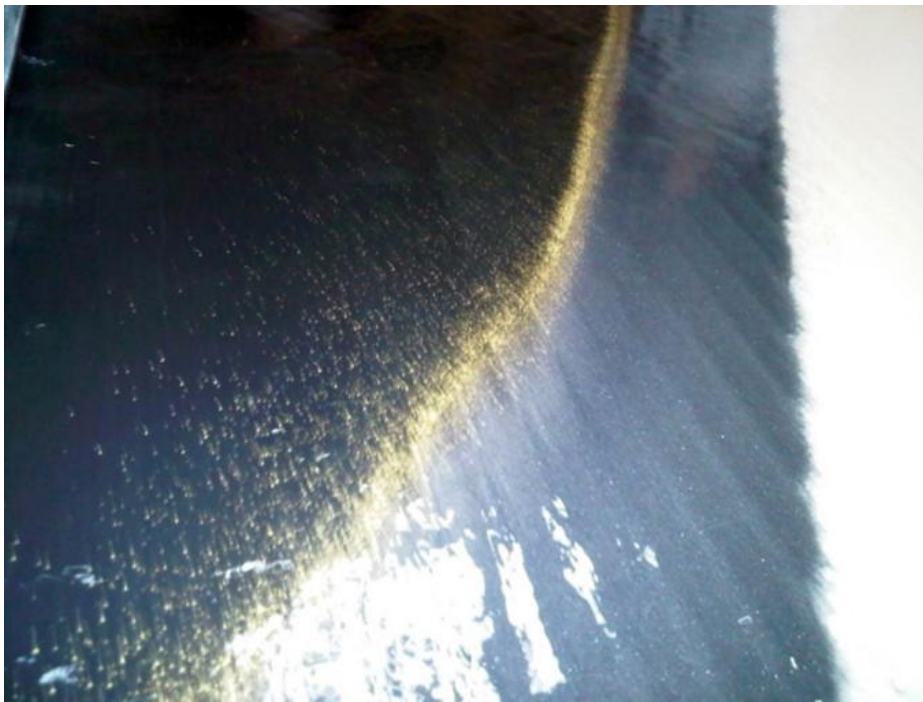
Product specifications

Model NO.	6S	Table Size	4520*1850*156mm	
Stroke	8-36mm	Motor Power	1.1kw	
Time/min	240-380	Dimension	5630*1850*900mm	
Landscape	0-5°	Table Weight	650kg	
Material	Feeding Size	Mine Density	Flushing Water	Capacity(t/h)
Coarse Sand	2-0.5mm	10-30%	0.5-3.5t/h	1-2.5
Fine Sand	0.5-0.074mm			0.8-1.2
Ore Mud	0.0774-0.037mm			0.3-0.6

Customer working site







Product package and delivery



**ASCEND** Henan Ascend Machinery Equipment Co., Ltd.

+86 18221130967

wilson\_ascendme@163.com

mining-crushermachine.com

Shenglong block, high tech zone, Zhengzhou, China